



Ortopedia – fullorðnir

- Sjúkdómafræði -

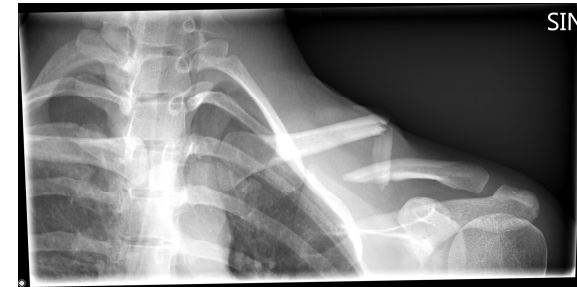
Áverkar (heit ortopedia)

Halldór Jónsson jr

Bæklunarskurðeild LSH og Læknadeild HÍ

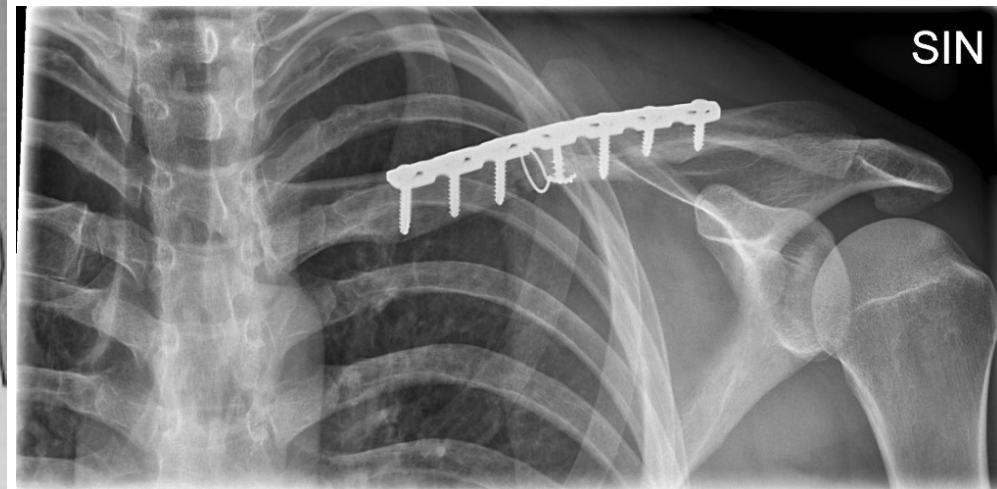
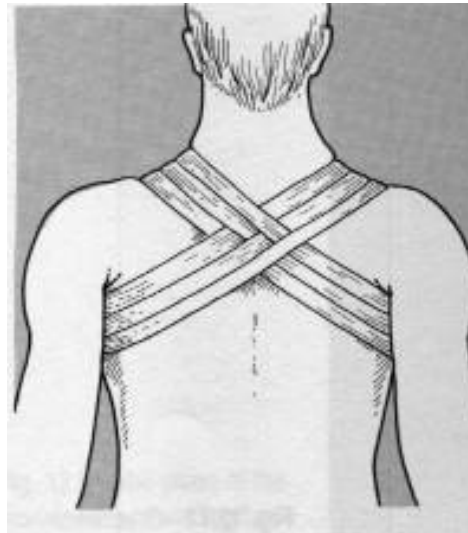
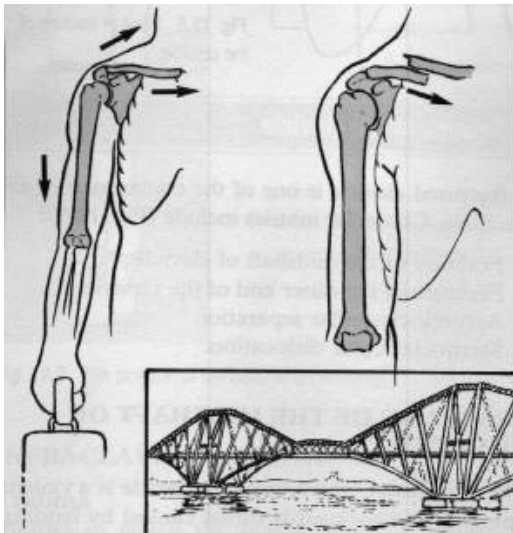
Öxl - viðbeinsbrot

- Öxlin dettur niður og inn (Varúð: TOS)
- Ath húð
- Ath lausan flaska og/eða styttingu



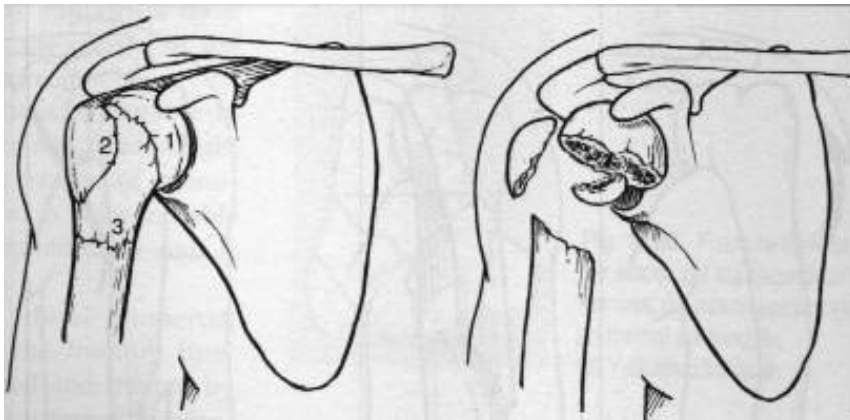
Dæmi: 8-tölu bindi

Dæmi: plata

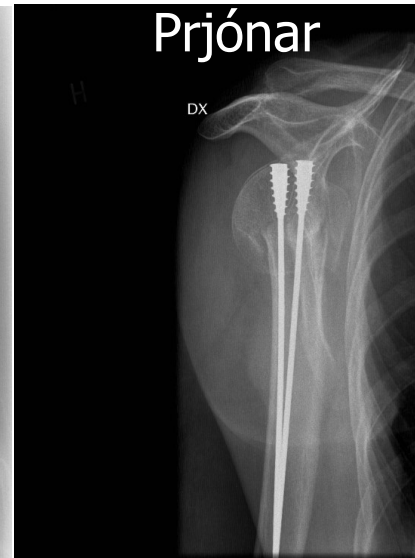
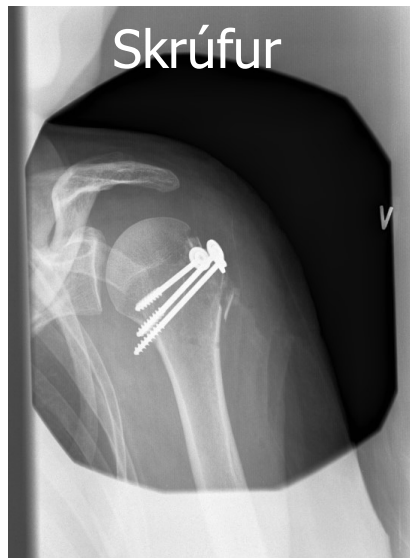
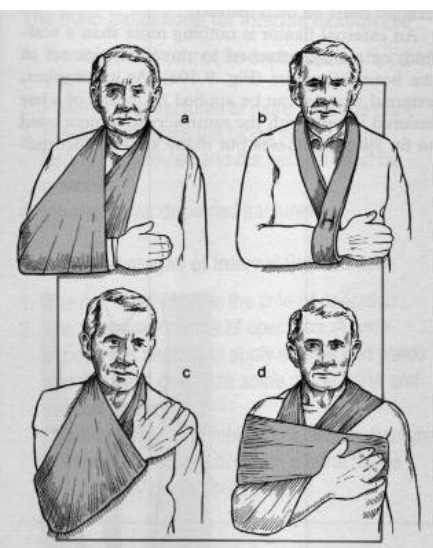


Öxl – efri upphandleggsbrot

- 1. Coll anatomicum, 2. tuberc majus og 3. coll chir



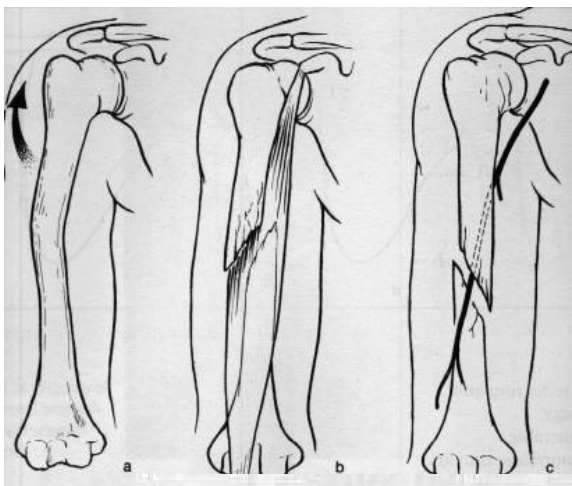
collar 'n cuff (b)



HJjr

Upphandleggsbrot - skaftið

- Diafysan



Varúð: N. Radialis
og fallhendi

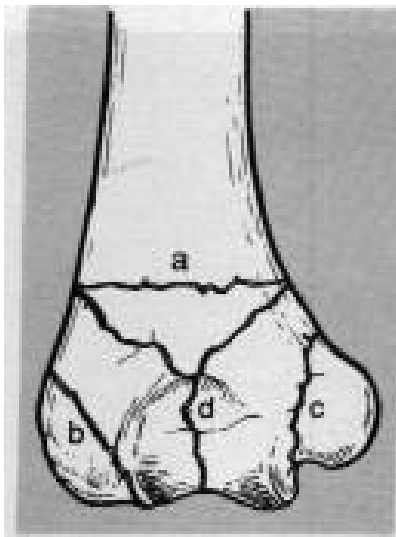
Hanging cast



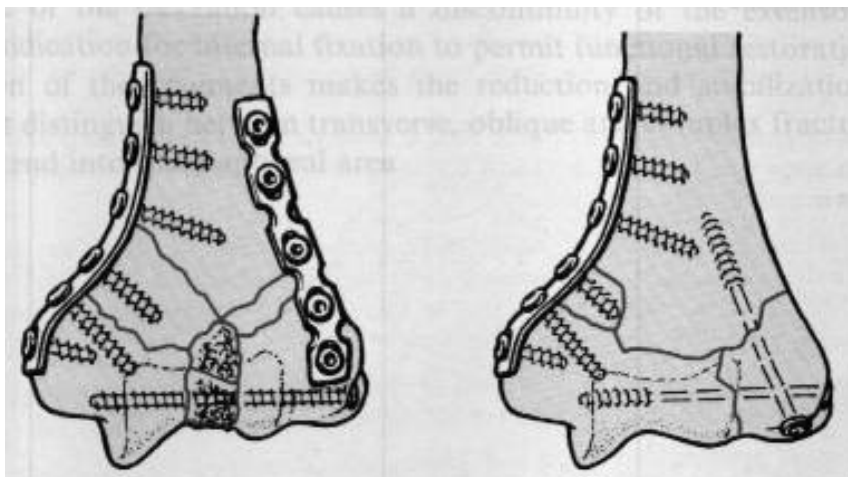
Mergnagli

Olnbogi – fjær upphandleggsbrot

- Varúð: N. Ulnaris; mikill stirðleiki



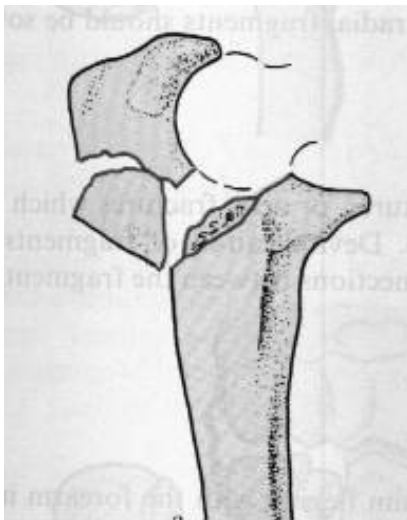
a) supracondylar, (d) transcondylar,
(b) lat epicondyl, (c) med epicondyl



Plötur og skrúfur

Olnbogi – nær framhandlegg sbrot

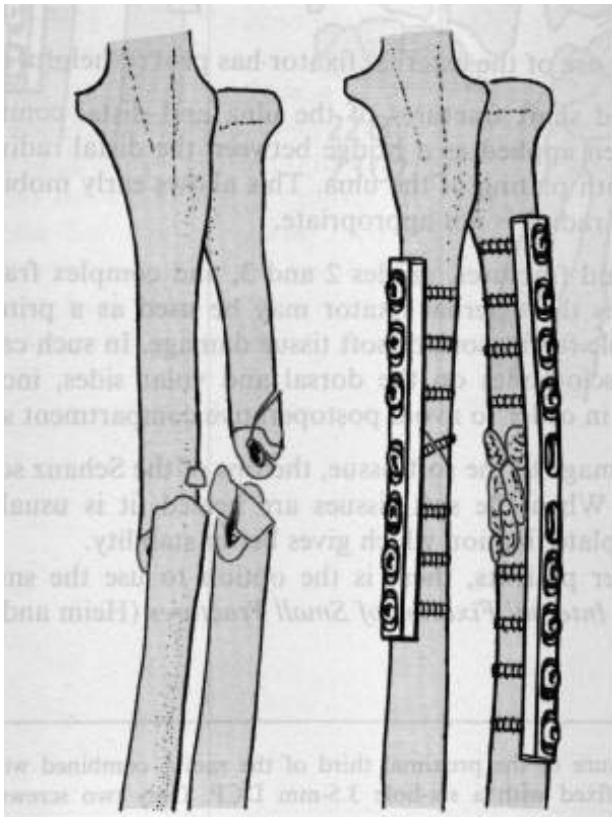
- Olecranon



Stálpinni og vír
(zuggurtung)

Framhandleggsbrot – skaftið

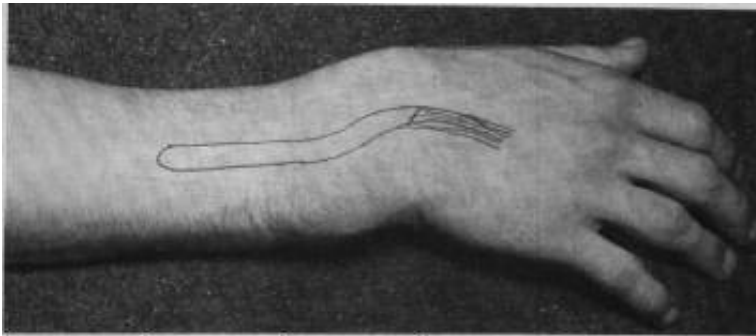
- Báðar pípur; varúð: compartment!



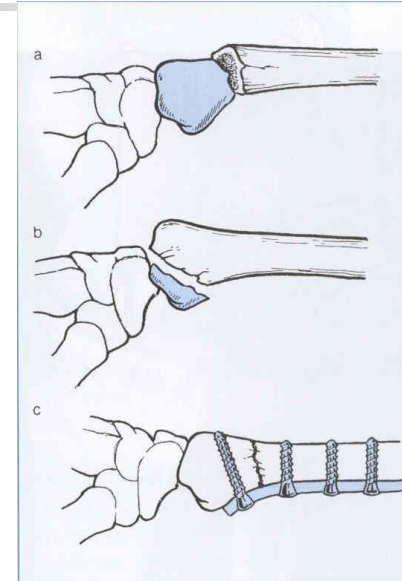
Skrúfur og plötur

Framhandlegggsbrot – úlnliður

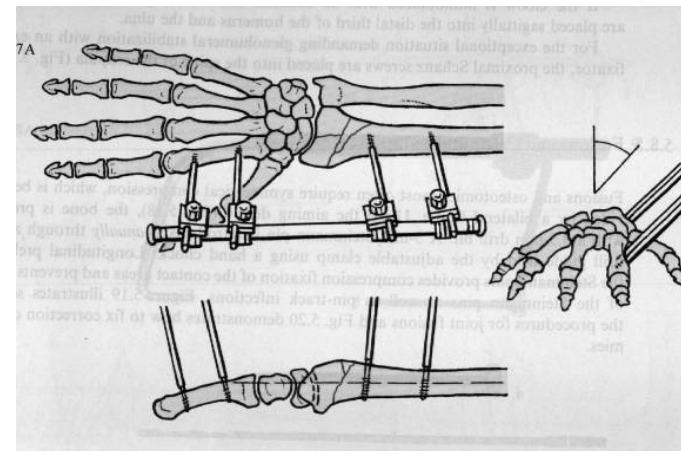
- Colles; varúð: carpal tunnel



Dorsal gifsspelka



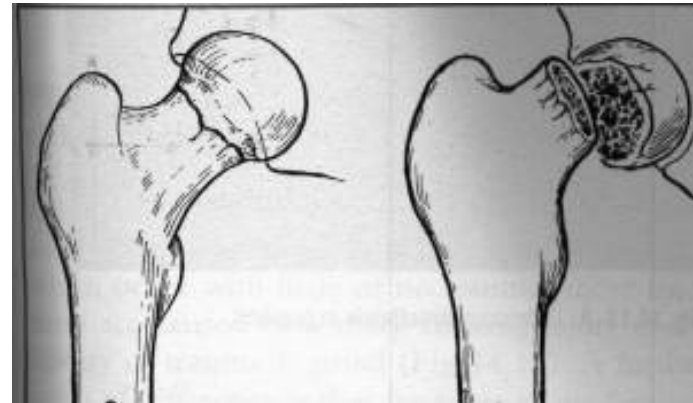
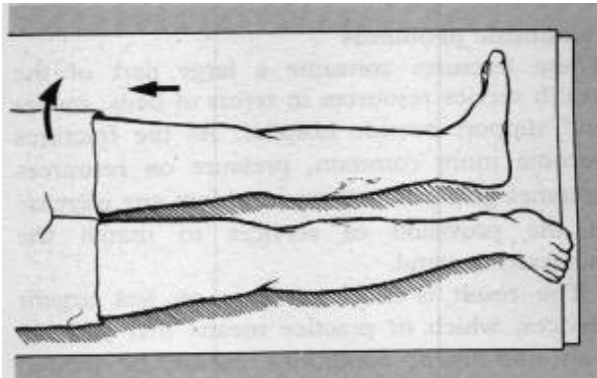
Volar plata



Ex fix - Hoffmann

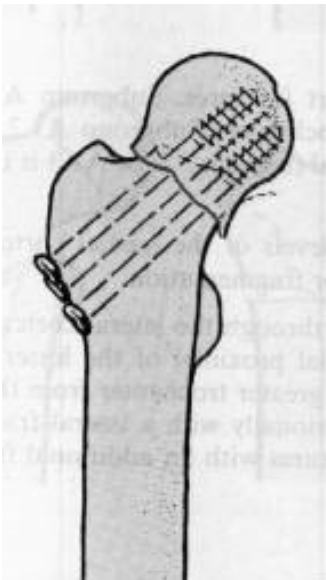
Lærleggssbrot – mjaðmaliður

- Collum; styttur og útsnúinn – ekki lærbólga



Garden

Collum
skrúfur/
naglar
LIH

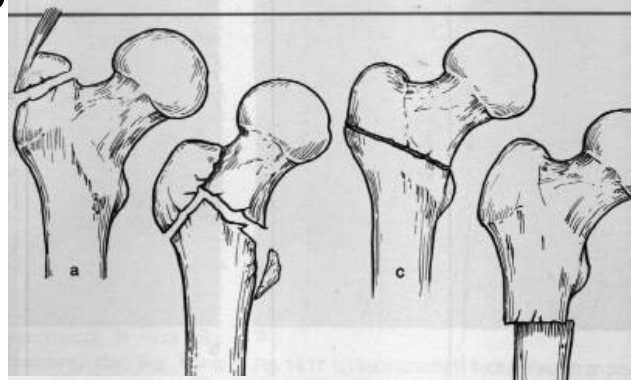
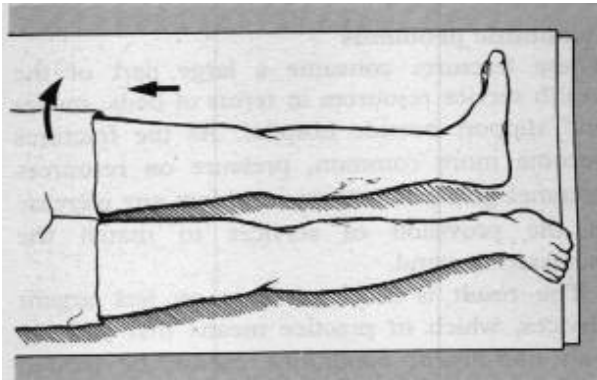


Bi-polar

HJjr

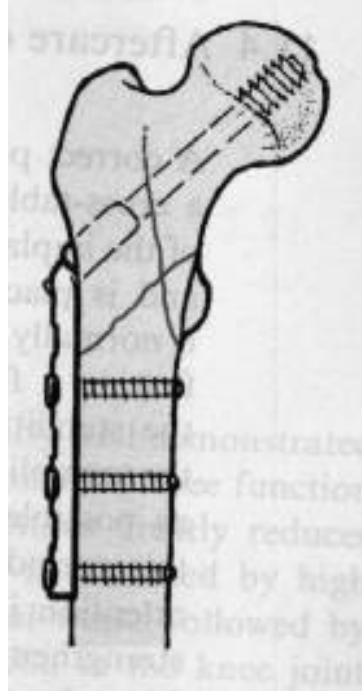
Lærleggssbrot – mjaðmaliður

- Trokanter; styttur og útsnúinn – mikil lærbólga



Collum
skrúfa
og plata

DHS



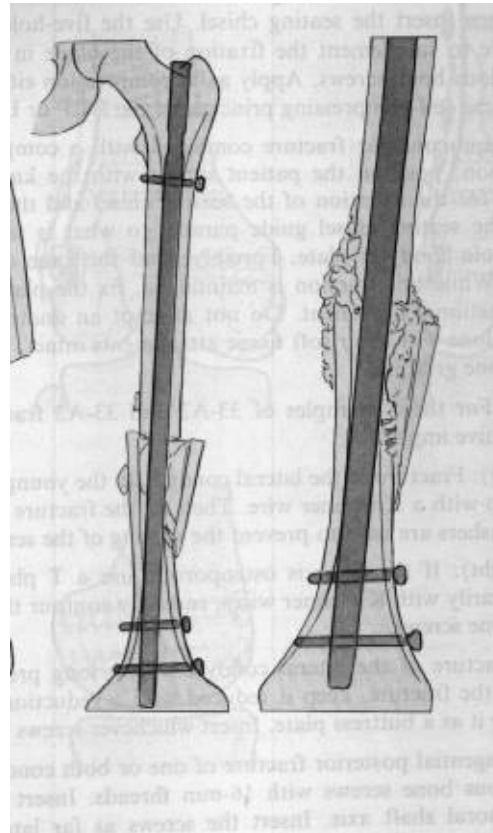
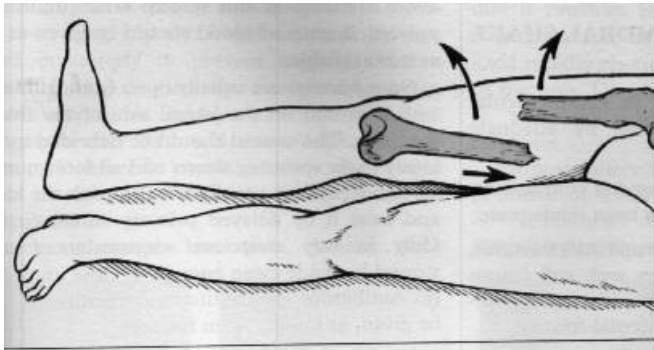
Collum
skrúfa og
mergnagli

Gamma

HJjr

Lærleggsbrot – skaftið

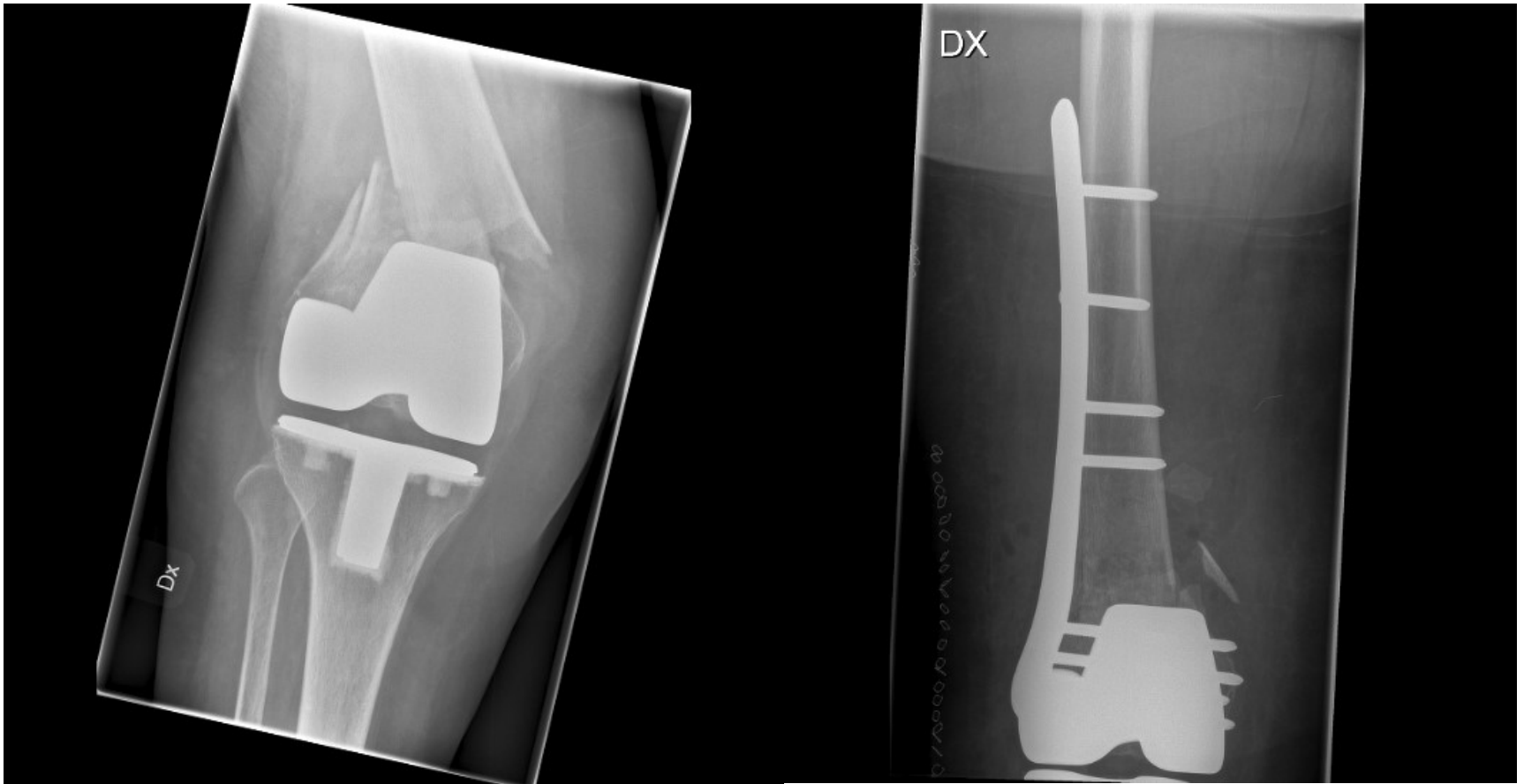
- Diafysan; styttur og útsnúinn; mjög mikil bólga



Mergnagli
og
þverskrúfur

Lærleggsbrot – hnéliður

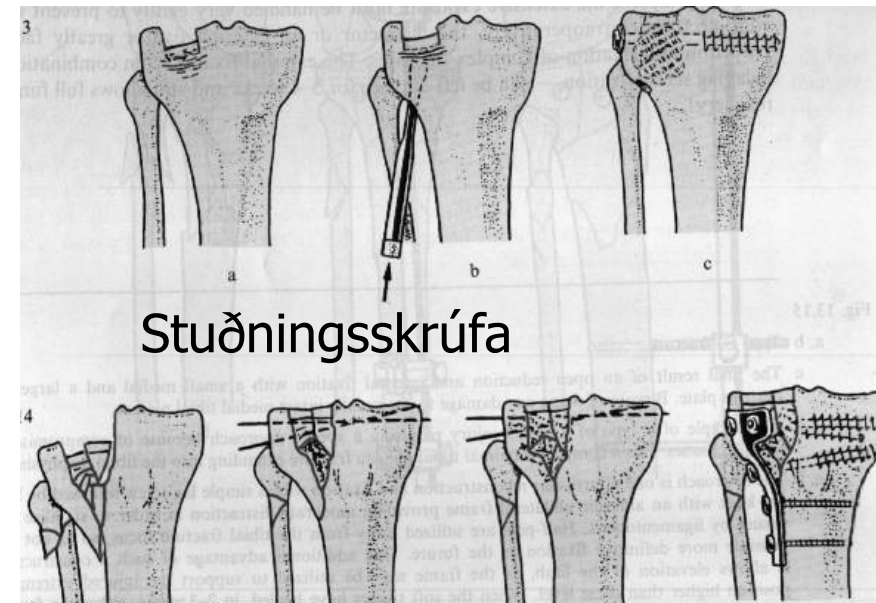
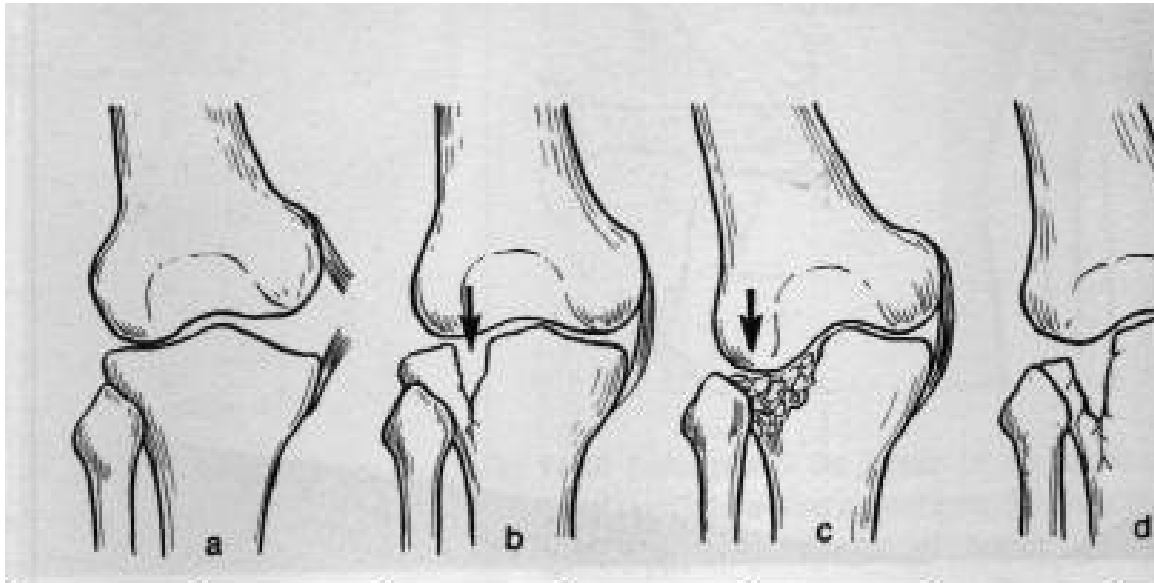
- Supracondylar („periprosthetic fx“ -grenndarbrot)



LISS plata

Sköflungsbrot – hnéliður

- Lateral tibia condyl

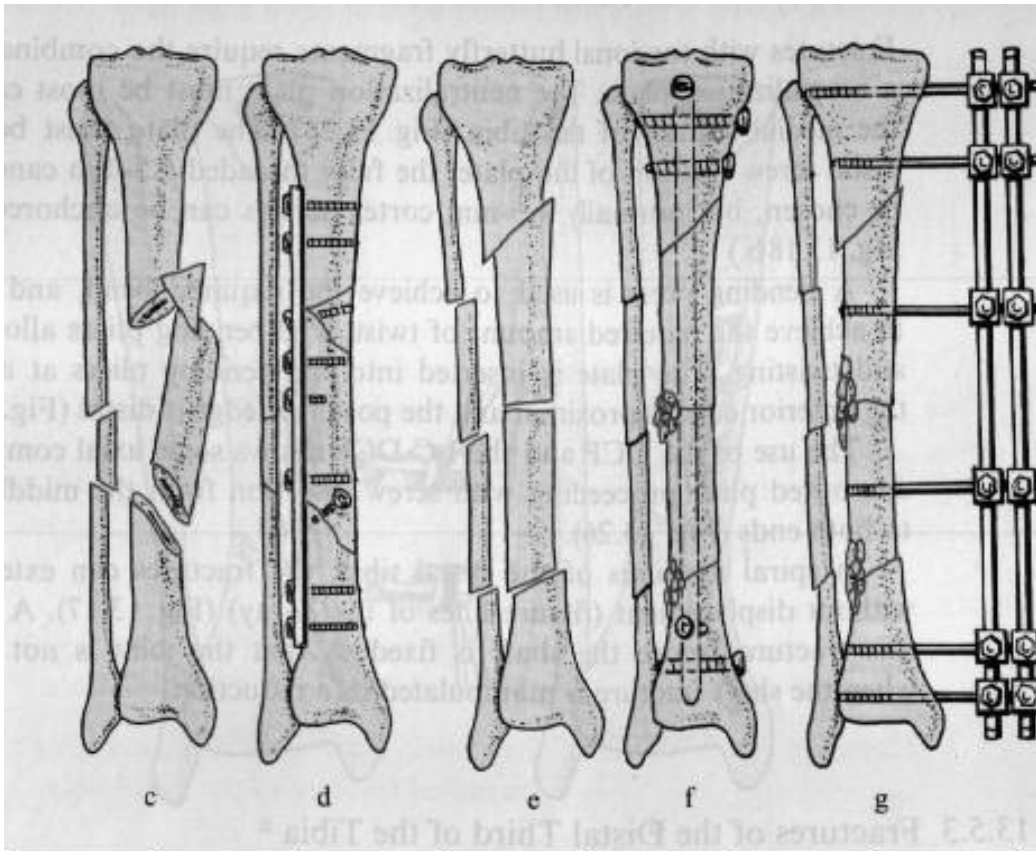


Stuðningsskrúfa

Stuðningsplata

Sköflungsbrot – skaftið

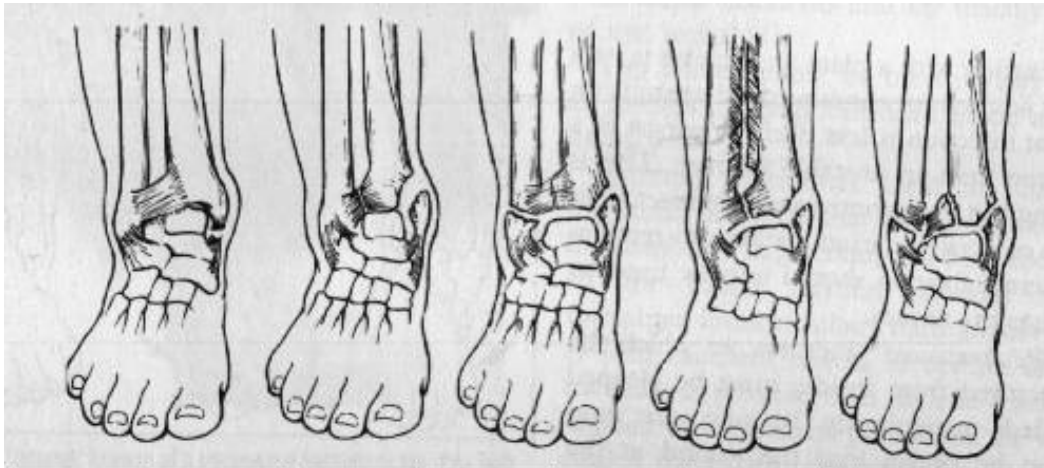
- Diafysan; varúð compartment



Plata (d), mergnagli (f), ytri festing - Hoffman (g)

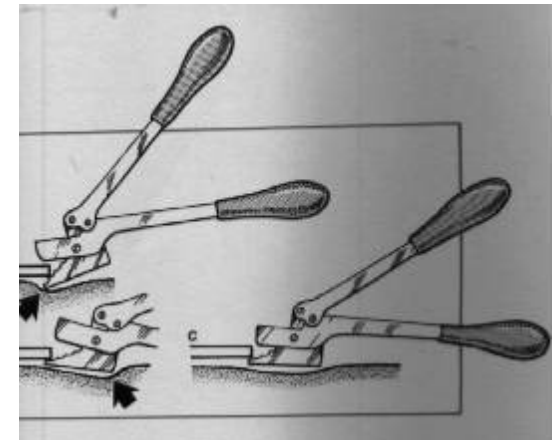
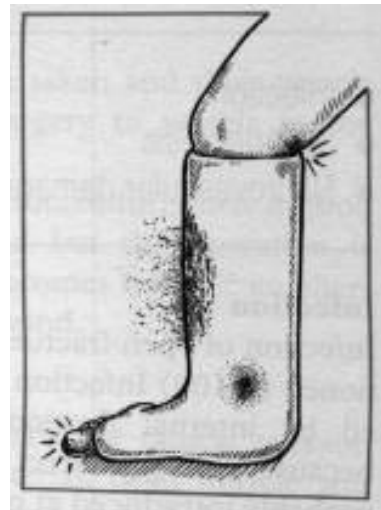
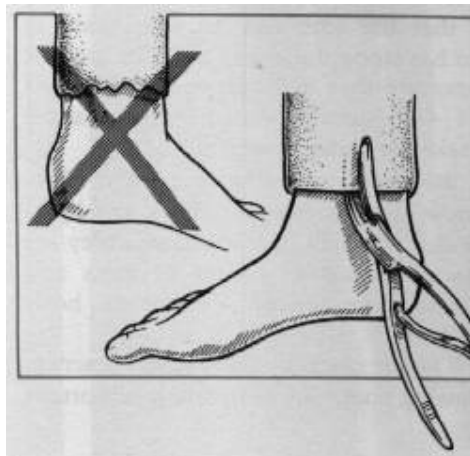
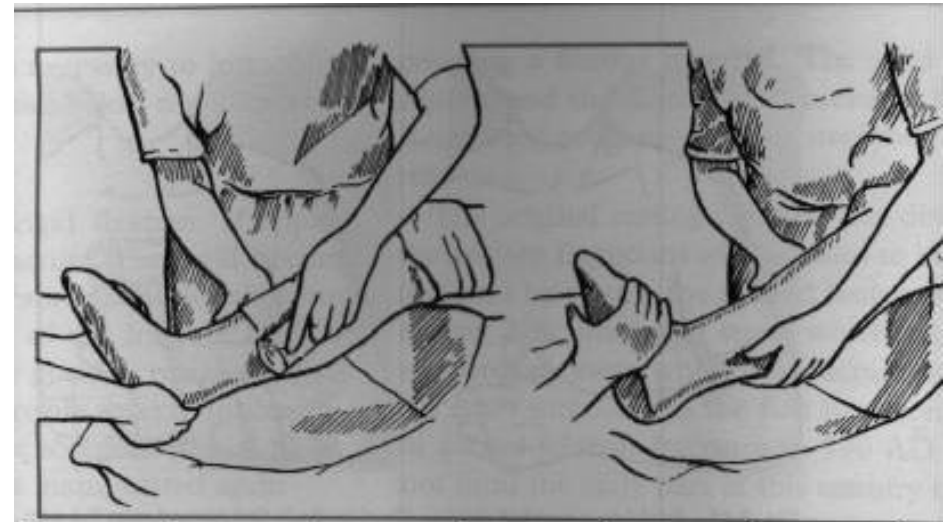
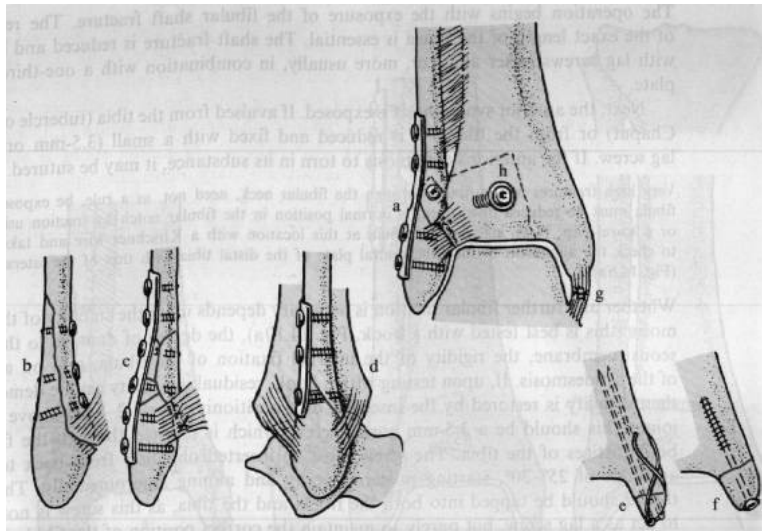
Ökklabrot – kúlurnar

- Lat mall; bi-mall; tri-mall; varúð liðhlaup



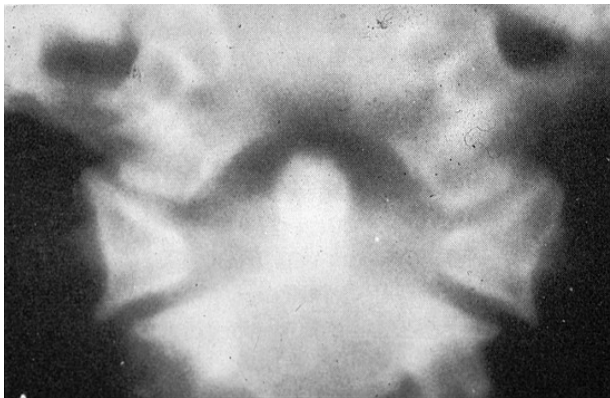
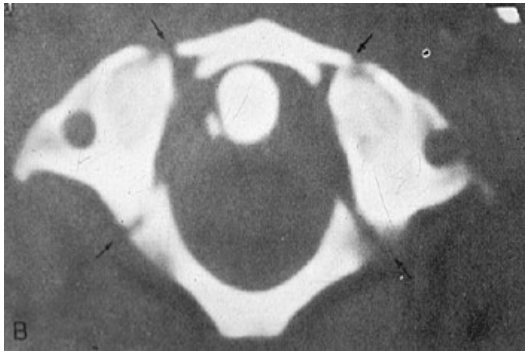
Ökklabrot – kúlurnar

- Skrúfur, plötur, pinnar, cerclage, gifs

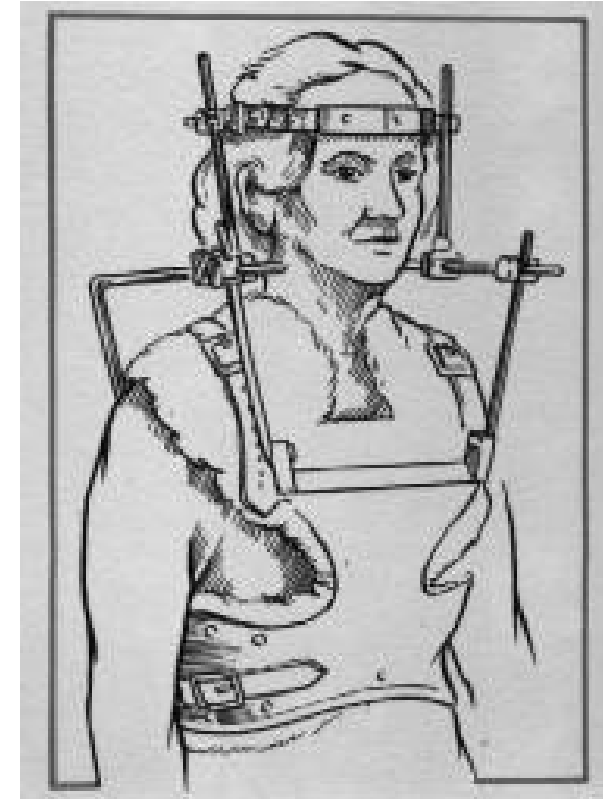


Hryggbrot – hálshryggur

- Efri: C1-Jefferson



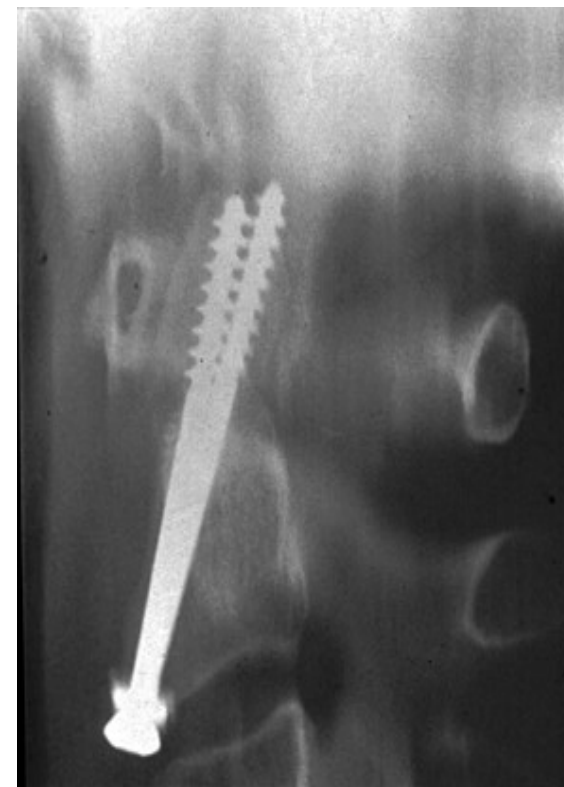
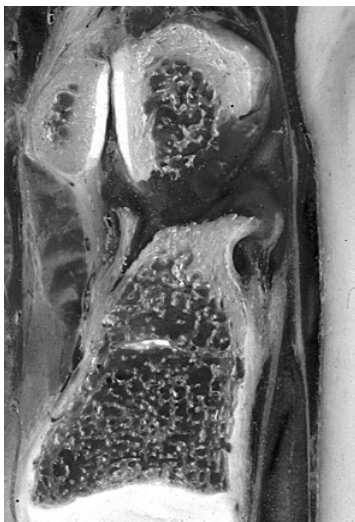
Philadelphia



Halovesti

Hryggbrot – hálshryggur

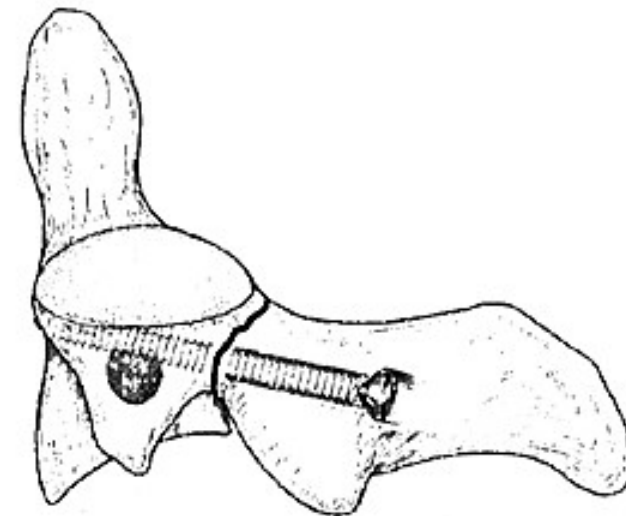
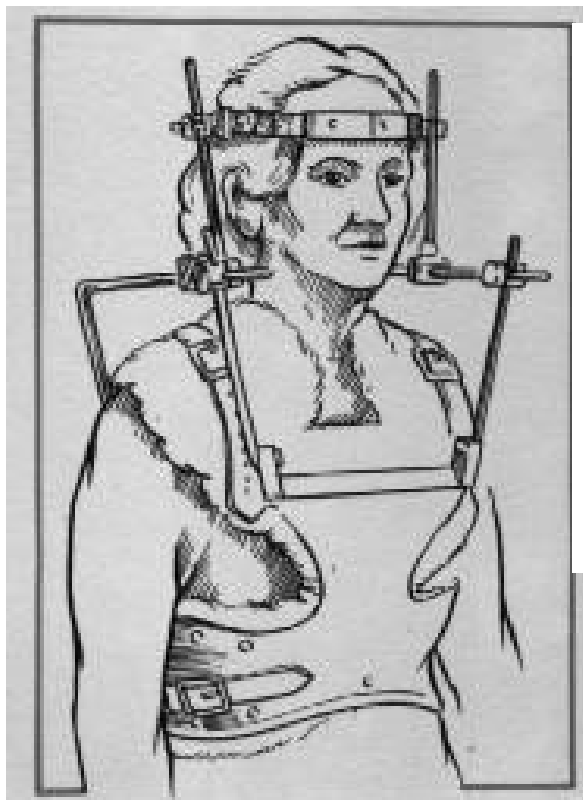
- Efri: C2- fremri (Dens)



Böhlers skrúfur

Hryggbrot – hálshryggur

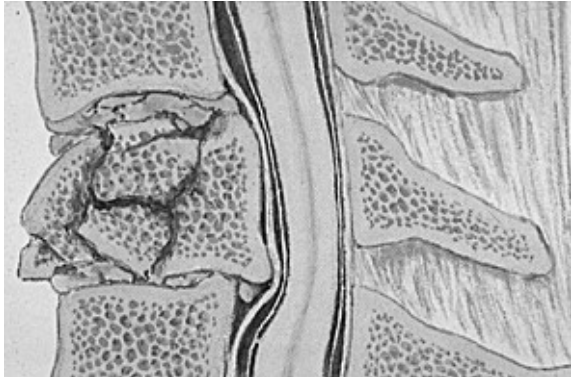
- Efri: C2- aftari (Hangmans)



Magerls skrúfur

Hryggbrot – hálshryggur

- Neðri: C3-C7 (hryggjarbolsbrot)



Plata og skrúfur



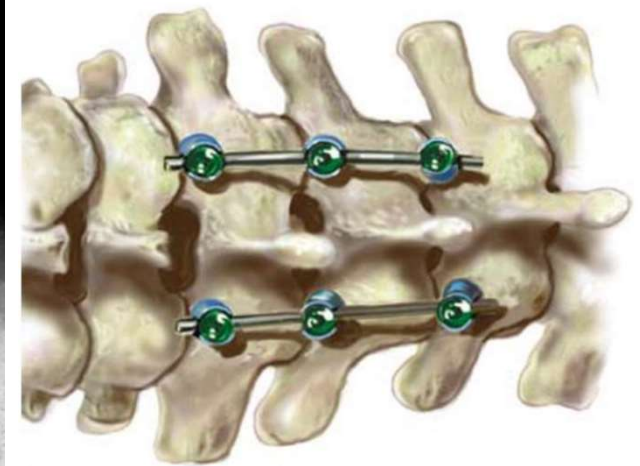
MaxAn

Hryggbrot – hálshryggur

- Neðri: C3-C7 (hálshryggjarliðhlaup)



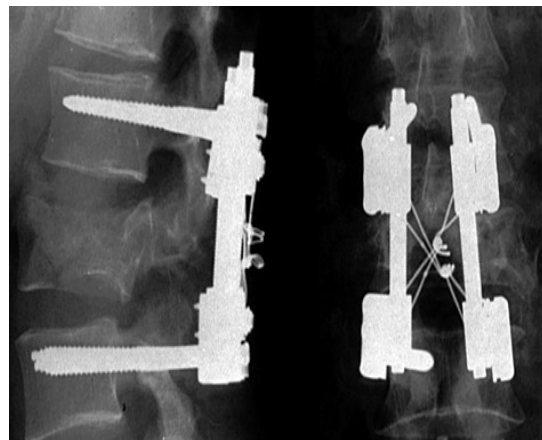
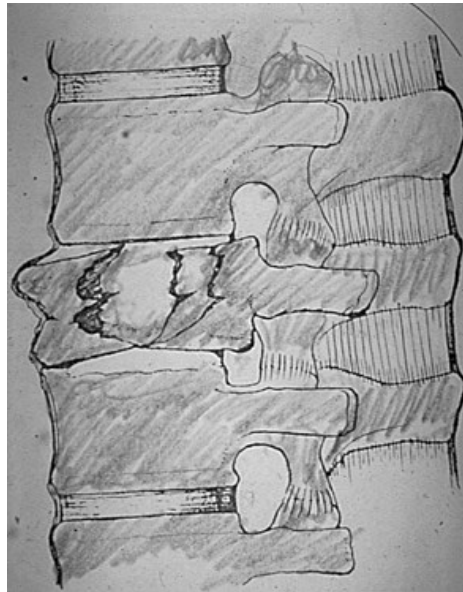
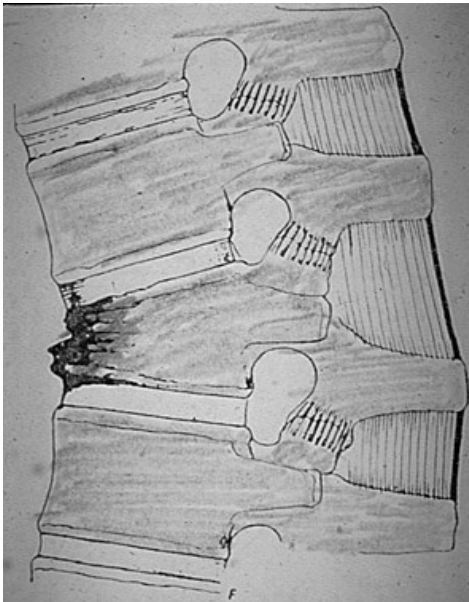
Fremri og aftari festing



Vertex

Hryggbrot – brjóst/lendhryggur

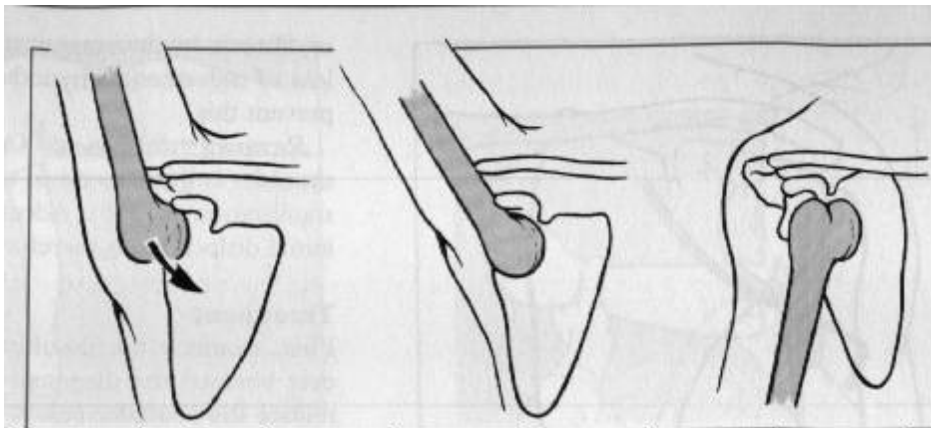
- TH12-LI-LII hryggjarbolsbrot



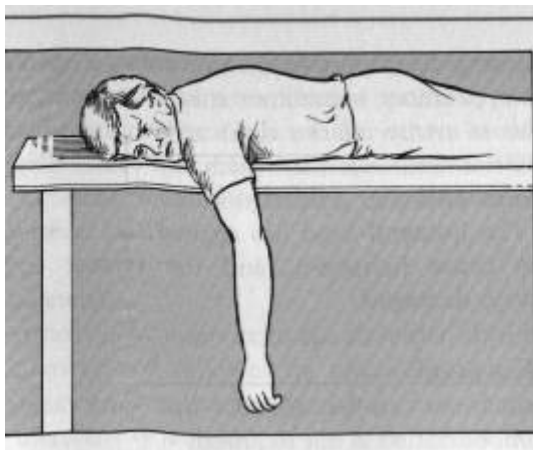
Dicks festibúnaður
(USS – Universal
Spine System)

Liðhlaup – öxl

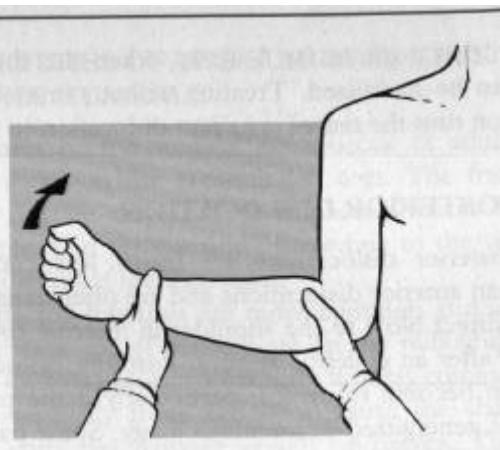
- Humeroglenoidal



Stimson

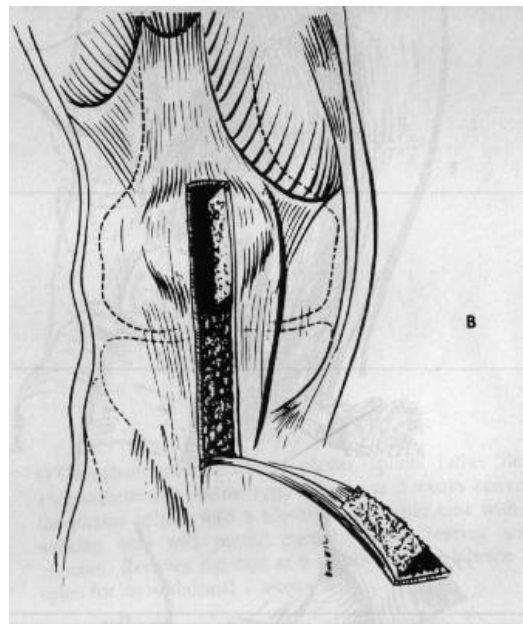


Kocher



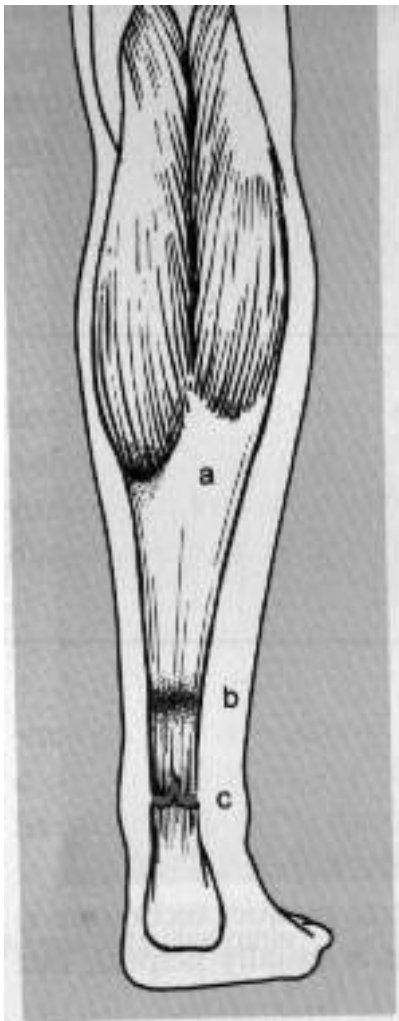
Liõbandaslit – hné

- Fremra krossbandið



Sinaslit – hásin

- Achilles tendon



Walker

